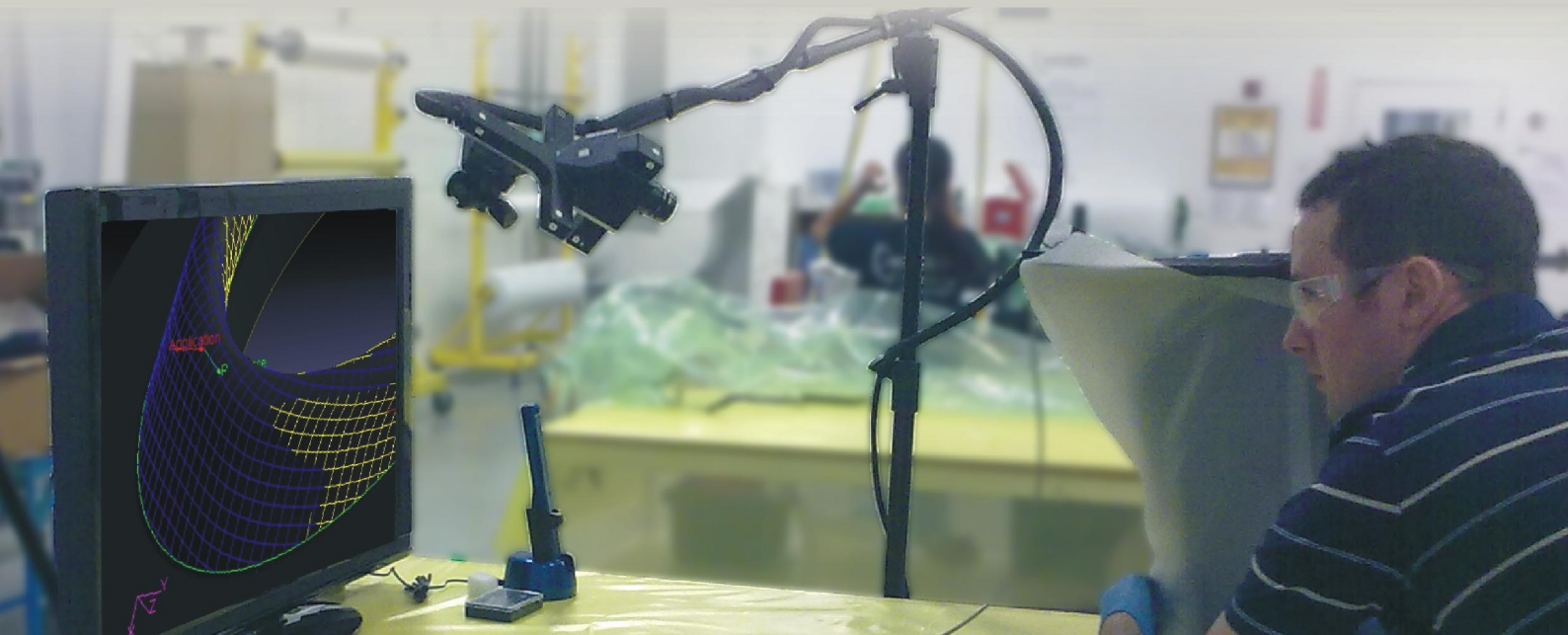


PlyMatch™

Ply Placement Visual Control

In the manufacture of composite structural components by manual lay-up, accuracy in ply placement as well as quality assurance regarding the correct ply orientation and sequence are critical.



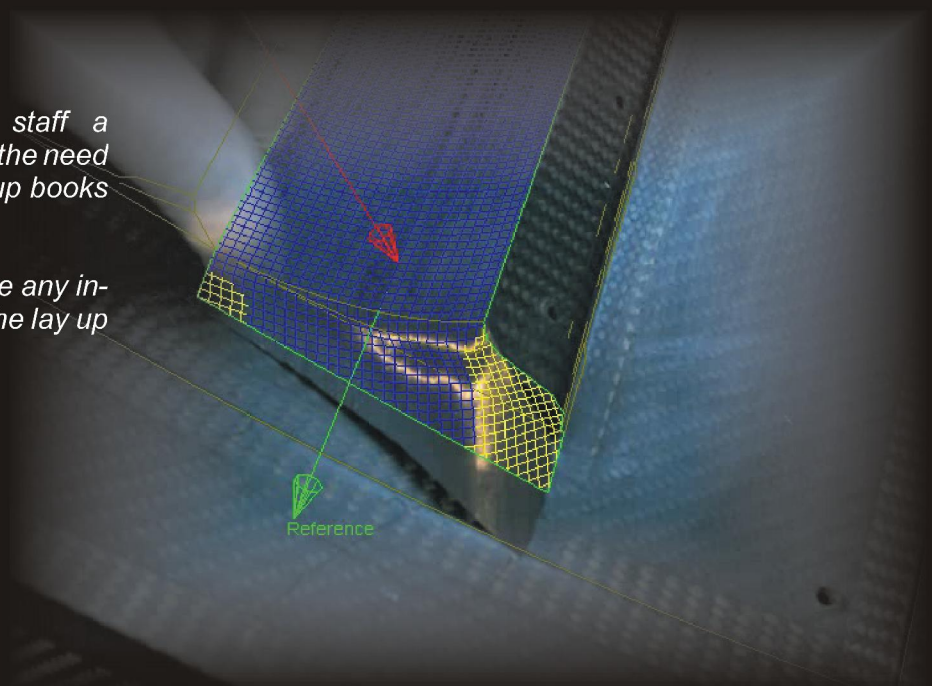
The unique feature of PlyMatch is to display together on a large screen:

- ▶ a live video image of the "real world" that the operator is interacting with, and
- ▶ a computer-generated image of the structure and composite ply being assembled.

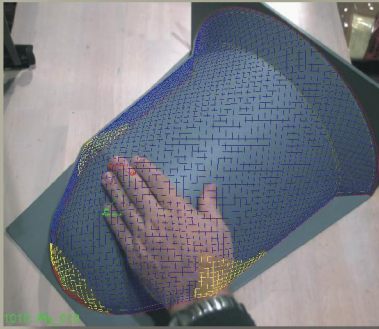
"PlyMatch gives our manufacturing staff a complete definition of a laminate without the need for any detail drawings or separate lay up books to be produced by the designers.

The production staff do not need to make any in-mould measurements, so speeding up the lay up and insert positioning processes.."

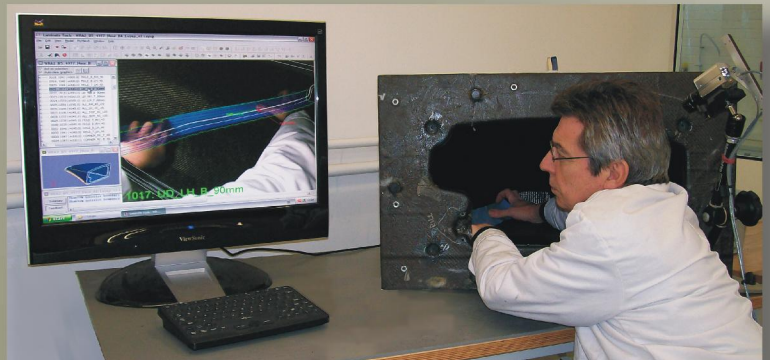
**John McQuilliam, Chief Designer,
Marussia F1 Team.**



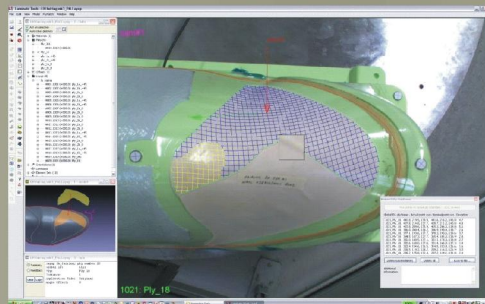
PlyMatch KEY BENEFITS



Excellent for highly curved parts



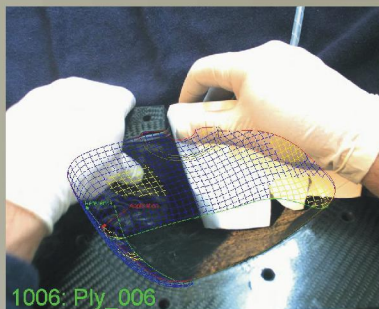
Can work Inside cavities



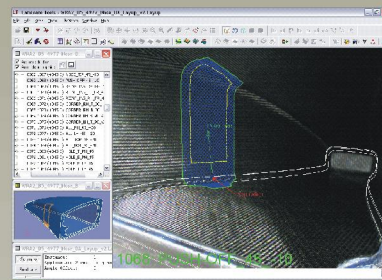
Allows deviation measurements



Mould can be moved at all times without the need for recalibration



Can show full draping details, or other manufacturing data



Can be used directly with Laminate Tools or with any CAD system



Alternative use purely as wireless CMM (Coordinate Measurement Machine)

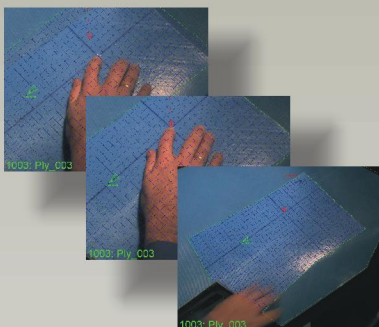
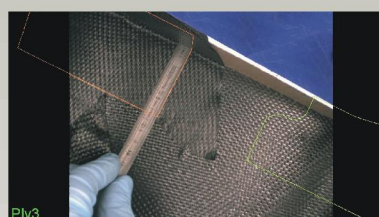


Image or Video recording enhances Quality Assurance



Versatile for templating

anaglyph ltd

Suite 33
10 Barley Mow Passage
London W4 4PH
United Kingdom

Tel: +44-20-89876056

Fax: +44-20-89941533

Email: sales@anaglyph.co.uk

Web: www.anaglyph.co.uk